

**BUILD TO
SUIT OR
FOR SALE!**

**300,000 SF -
1.1 MSF**



MERIDIAN 75

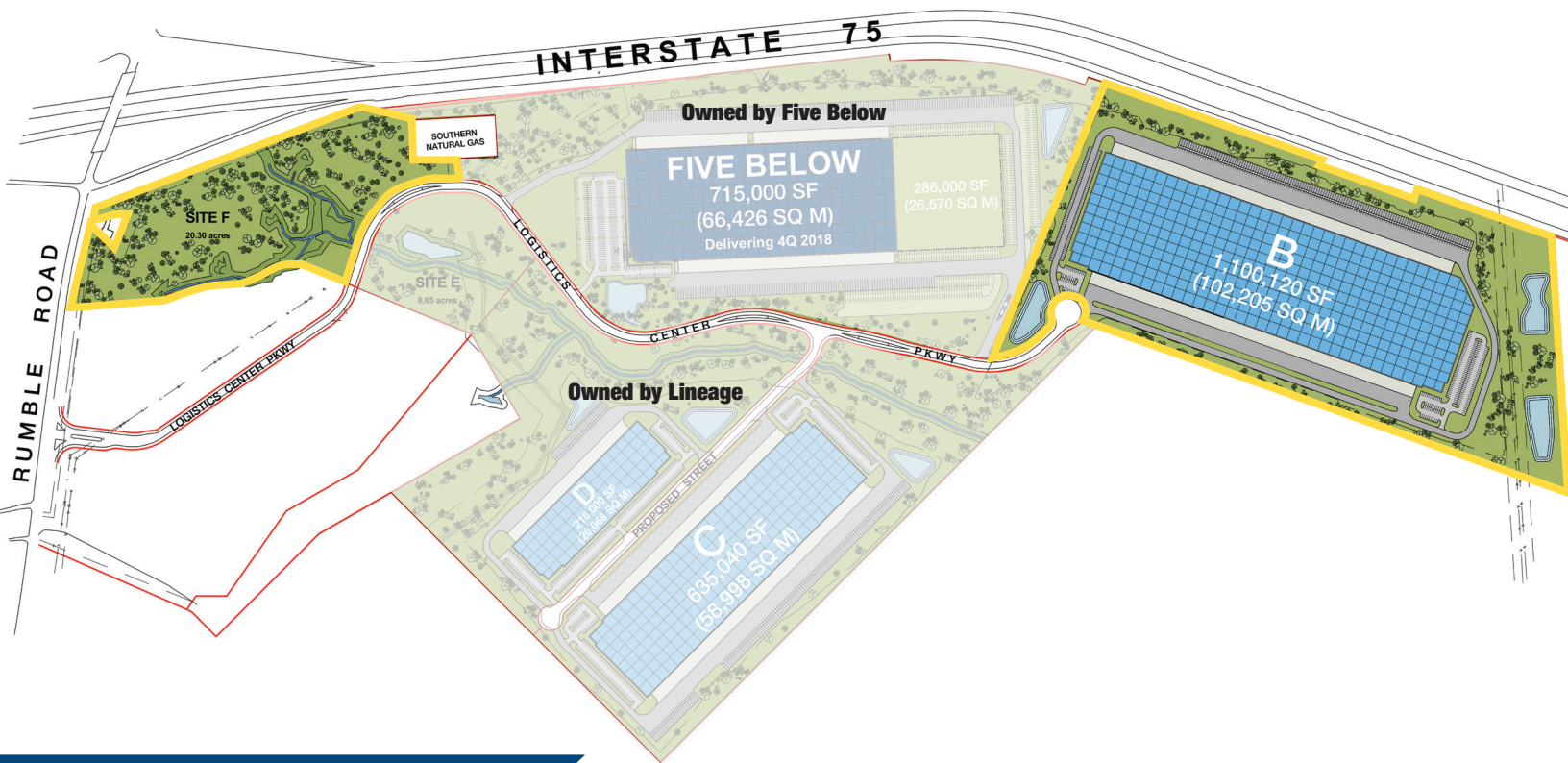
LOGISTICS CENTER

I-75 at Rumble Road, Forsyth, GA 31029

Site B - 300,000 SF - 1.1 MSF

 **IDI Logistics**

www.idilogistics.com



OPTION 1

Meridian 75 Logistics Center is an 186-acre master planned park located 45 minutes south of Atlanta and 2.5 hours from the Port of Savannah. Site B is a 66-acre site for sale or lease that is pad-ready and GRAD-Certified (Georgia Ready for Accelerated Development). Site F is a 21-acre site for sale that is zoned for retail use.



EXCELLENT DISTRIBUTION PIPELINE



66 acres

GRAD-CERTIFIED, GRADED SITE

DESIGNATED FOREIGN TRADE ZONE

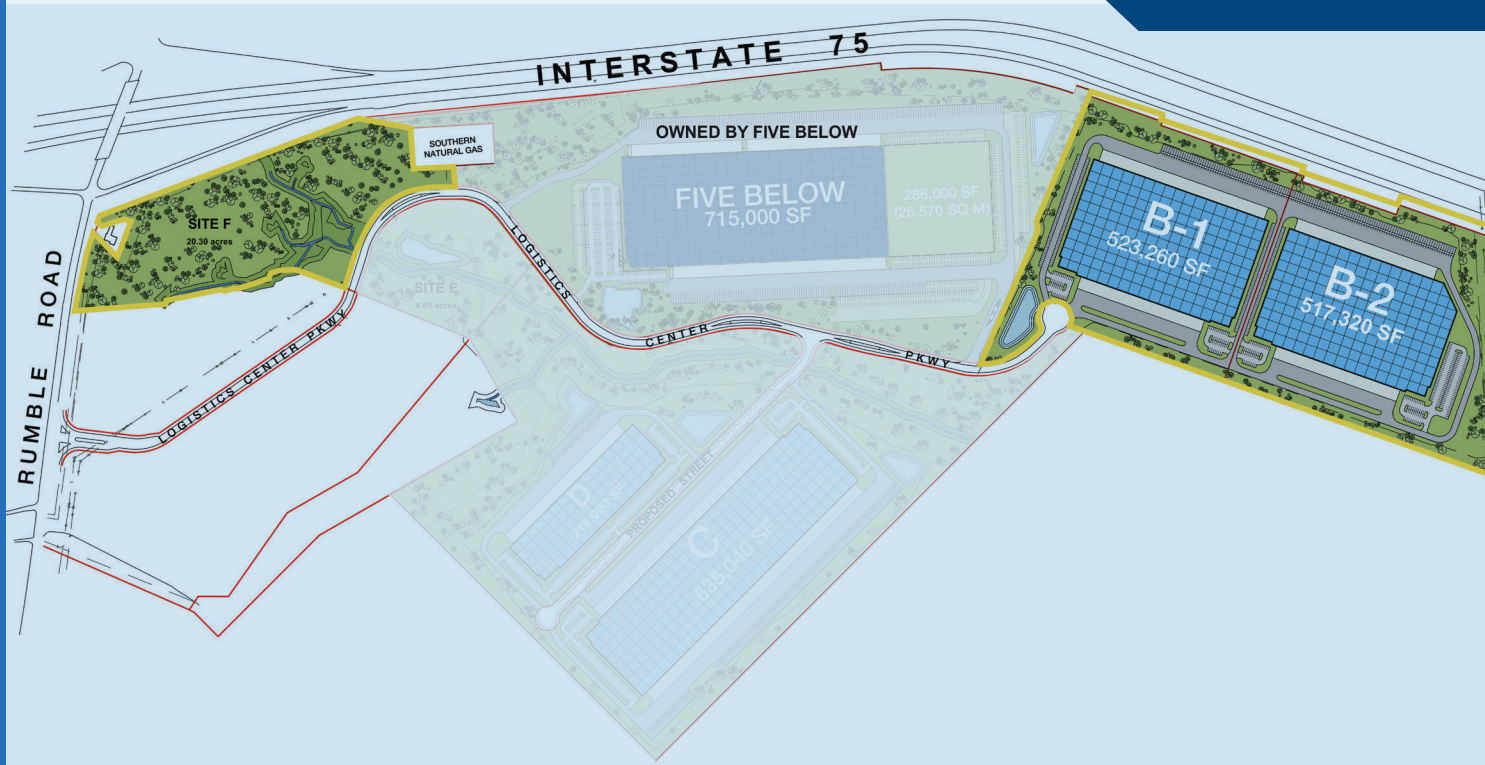
INTERSTATE 75 EXPOSURE

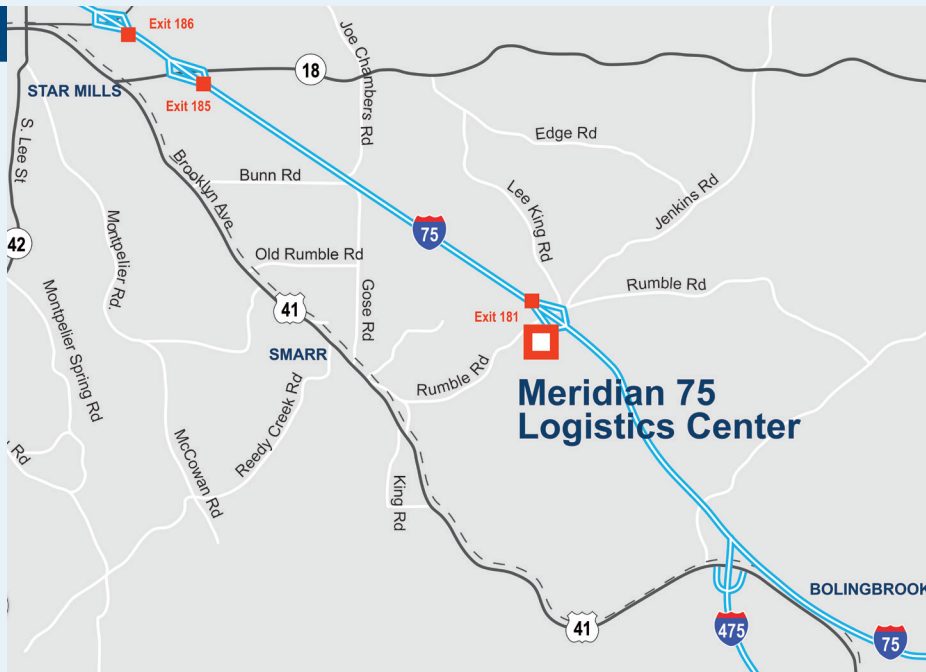
UP TO 1.1 MSF AVAILABLE WITH TWO BUILDING OPTIONS

- SITE B**
- 66.14 Acres
 - 300,000 SF to 1,100,120 SF
 - 570' building depth
 - Cross-dock
 - 128 trailer spaces
 - 341 auto spaces (Option 1)
 - 547 auto spaces (Option 2)

- SITE F**
- 21.641 Acres
 - Current zoning allows for retail, commercial, office and industrial

OPTION 2





DRIVING DISTANCES

AIR

Middle GA Regional Airport 28 miles
Hartsfield-Jackson Atlanta Int'l .. 61 miles
Savannah/Hilton Head Int'l 180 miles

INTERSTATES

I-75 1 mile
I-16 15 miles
I-285 58 miles
I-85 61 miles
I-20 67 miles
I-95 171 miles

PORTS

Savannah, GA 185 miles
Brunswick, GA 245 miles
Charleston, SC 280 miles
Jacksonville, FL 290 miles
Norfolk, VA 592 miles
Miami, FL 600 miles

With frontage on I-75, as well as access to the Port of Savannah and two airports, Meridian 75 provides an unparalleled level of exposure and ease of access for a large distribution user.



For more information, or to set up a tour, please contact:



Bob Robers
+1.404.460.8675
bob.robbers@cushwake.com

Pat Murphy
+1.404.460.8675
pat.murphy@cushwake.com

Brian Monaghan
+1.404.853.5212
brian.monaghan@cushwake.com

Nick Faber
+1.404.479.1642
nick.faber@idilogistics.com