



PROUDLY PURSUING
LEED
CERTIFICATION

**MODERN
BULK
WAREHOUSE
AVAILABLE
NOW**



LAKELAND LOGISTICS CENTER

Building B | 278,398 SF

1710 Lakeland Park Drive, Burlington, KY 41005

www.idilogistics.com

 **IDI Logistics**



Lakeland Logistics Center is a master-planned logistics park strategically located near I-75 and I-275 in pro-business Boone County, Kentucky. The park offers occupiers access to all Midwestern markets from a centrally located and growing e-commerce hub.



Lakeland Logistics Center is one of very few availabilities offering 36' clear height and divisibility to +/- 75,000 SF.

SITE BENEFITS

- Infill Location With Dual Interstate Access (KY 237 to I-275, KY 18 to I-75)
- Adjacent to Greater Cincinnati/Northern Kentucky International Airport (CVG) the Amazon Air Hub
- Close proximity to DHL Global Hub
- Excellent transportation infrastructure
- Pro-business Boone County, KY
- Diverse and affordable labor availability
- Affordable housing in region
- Established logistics campus setting
- Pursuing LEED® Certification

278,398

available
square
feet

TOTAL BUILDING: 278,398 SF

OFFICE SPACE: 3,600 SF

LOT SIZE: 26.27 acres

New Construction Modern Bulk Warehouse

CLEAR HEIGHT: 36'

BUILDING DEPTH: 310'

DOCKS: 29

DOCK EQUIPMENT:
27 doors with 40K lb. airbag levelers

DRIVE-IN DOORS: 2 (electric)

TRUCK COURT: 130' / 185'

AUTO PARKING: 221 spaces
(expandable)

TRAILER PARKING: 65 stalls
(expandable)

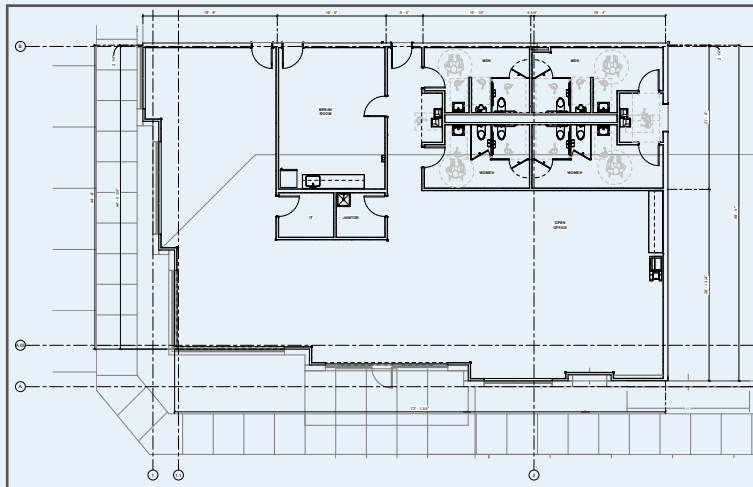
ROOF: White TPO

CLERESTORY: Front & rear walls

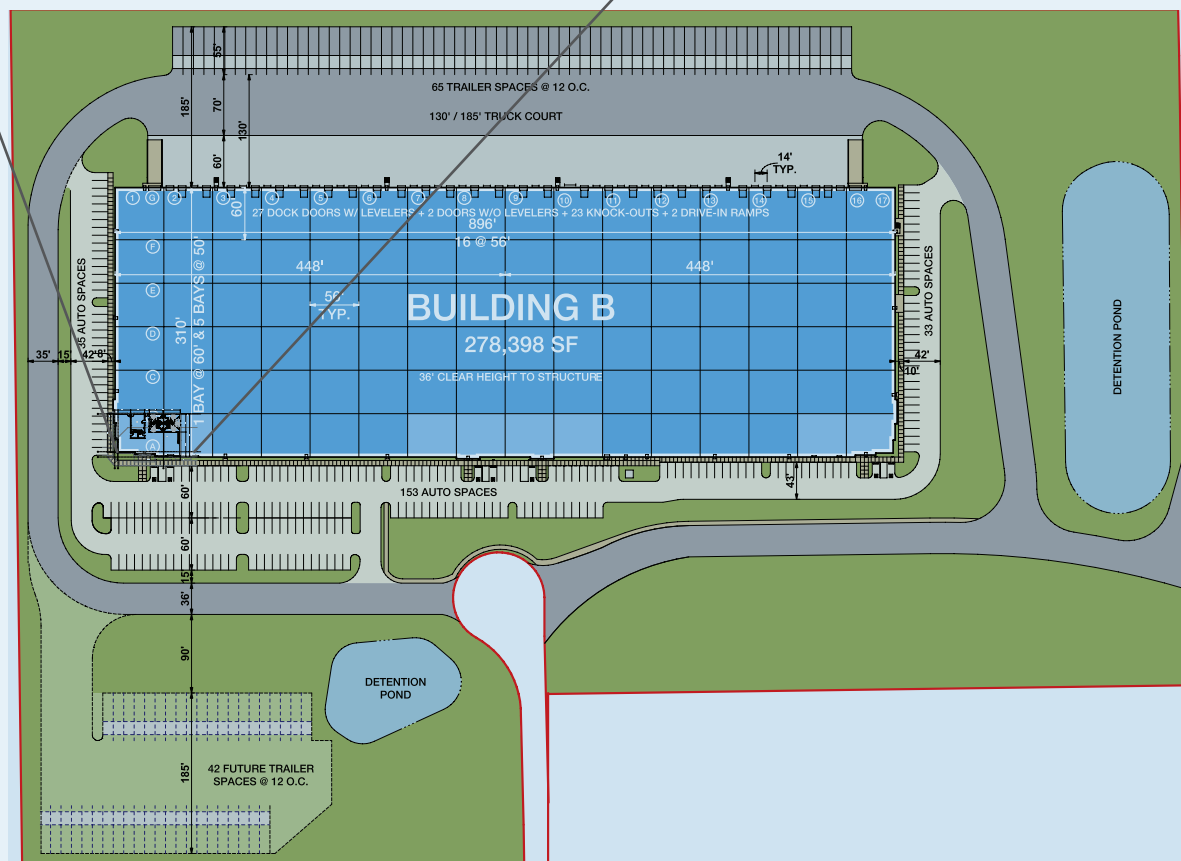
FLOOR SLAB: 6" Ductilcrete™

LIGHTING: LED

FIRE SPRINKLER: ESFR



3,600 SF SPEC OFFICE



DRIVING DISTANCES



I-71/75 3.5 miles
 I-275 4 miles
 Downtown Cincinnati 14 miles
 Lexington, KY 77 miles
 Louisville, KY 94 miles

SHIPPING

DHL Global Hub 7 miles
 FedEx 11 miles
 UPS 13 miles
 UPS Worldport 100 miles
 Amazon Air Hub 4 miles

INTERMODAL

Norfolk Southern 20 miles
 CSX 20 miles

AIRPORT

Northern Kentucky International Airport (CVG) 6 miles



For more information, or to set up a tour, please contact:

CBRE

Jeremy Kraus
 +1.513.369.1307
 jeremy.kraus@cbre.com

Bob Stephens
 +1.513.996.6952
 robert.stephens@idilogistics.com