



# SOUTH FORT WORTH COMMERCE CENTER

180,556 SF Available

1021 Everman Pkwy, Fort Worth, TX 76140



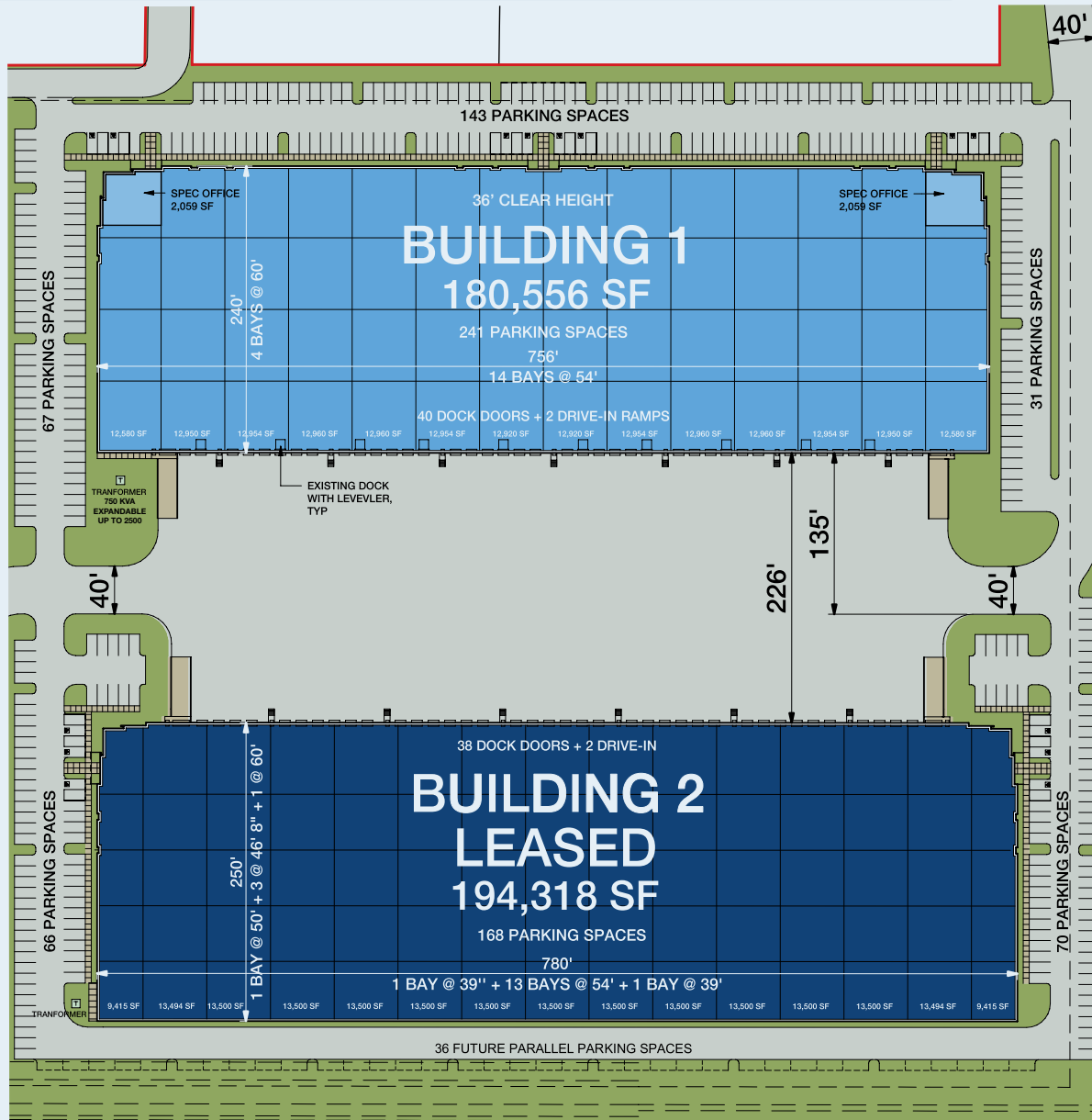
[View Property Video](#)



 **IDI Logistics**

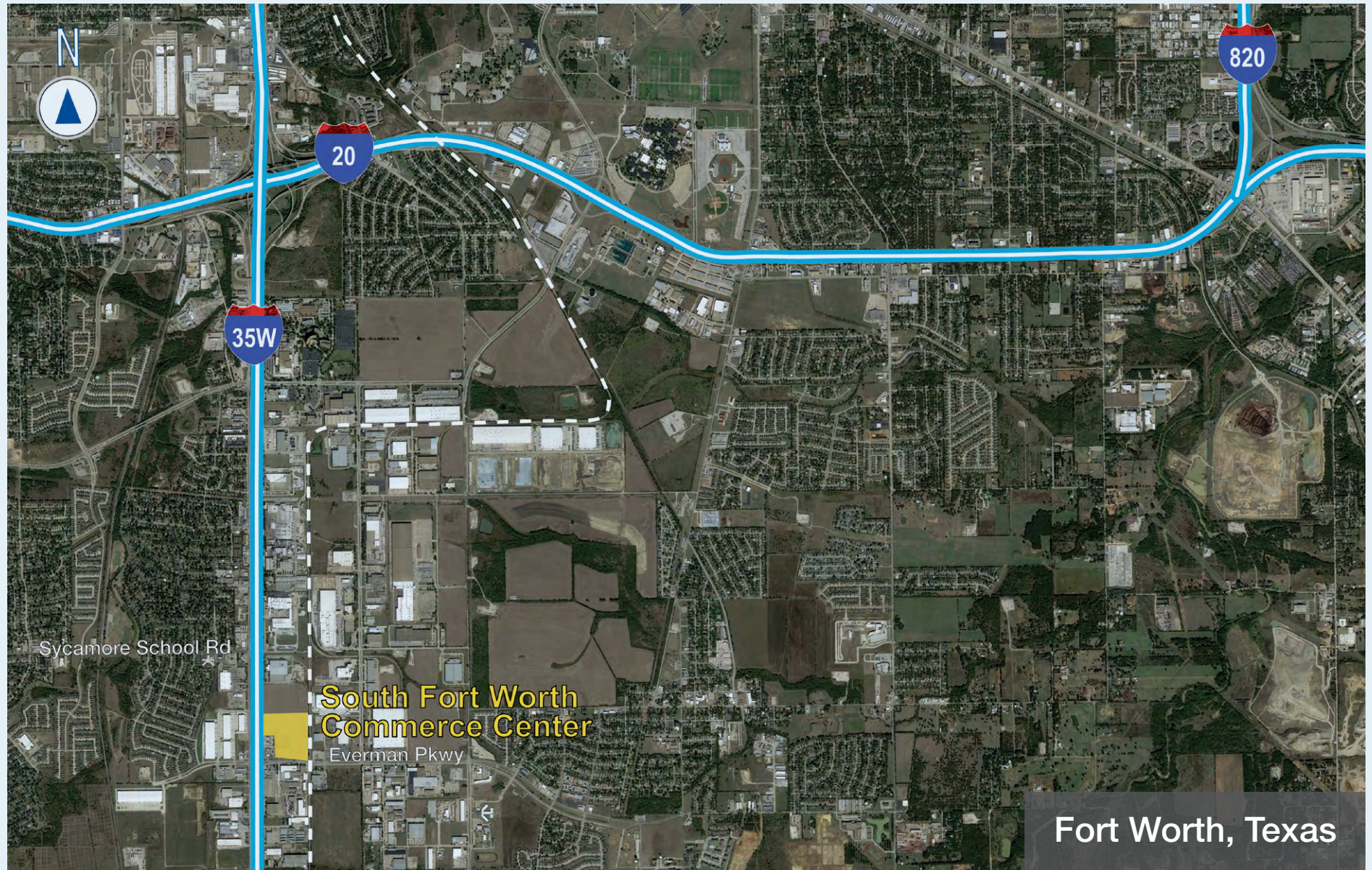
[www.idilogistics.com](http://www.idilogistics.com)

# PARK INFORMATION

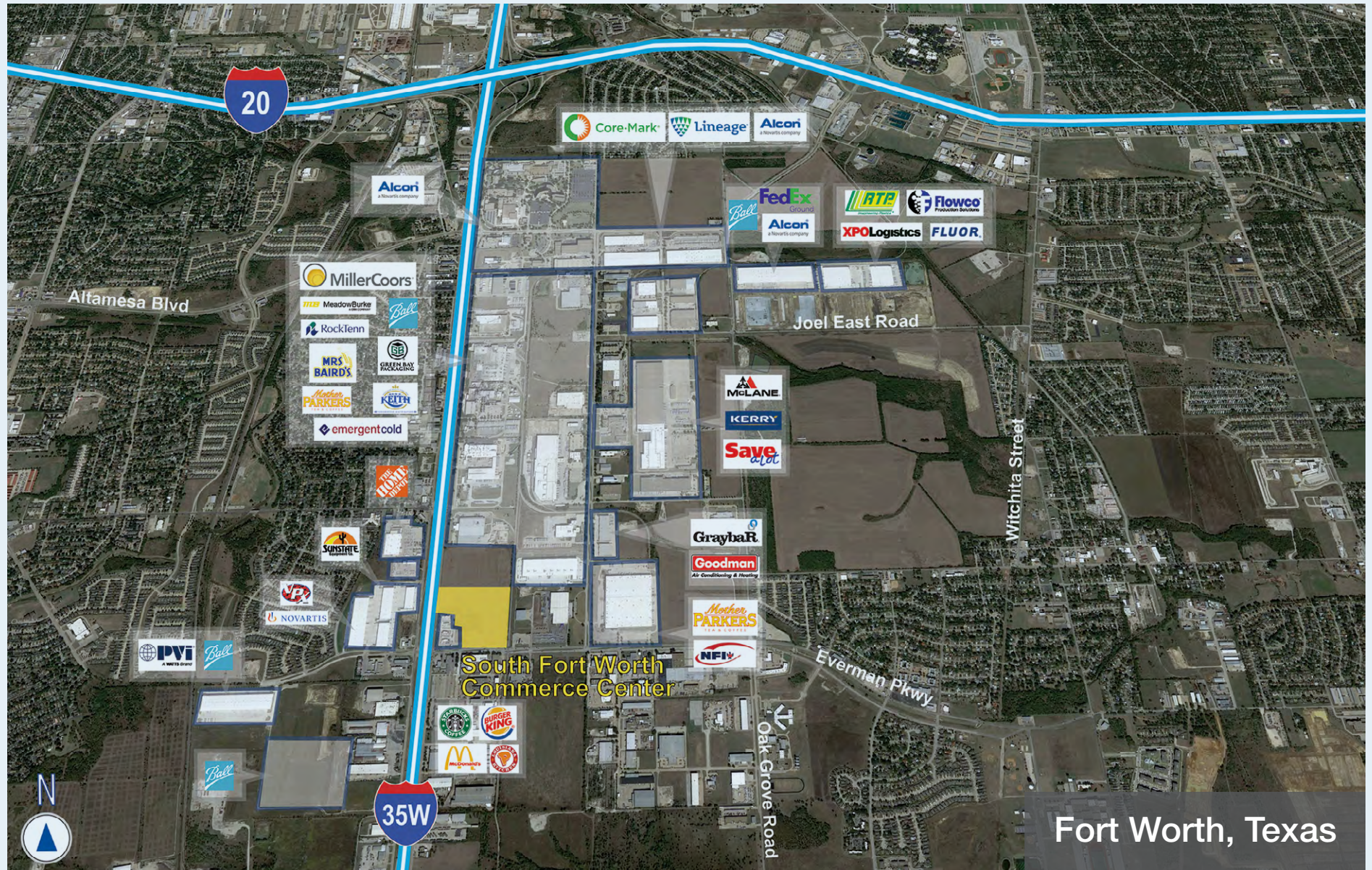


South Fort Worth Commerce Center, located in the South Fort Worth submarket on the northeast corner of I-35W and Everman Pkwy, is an ideal location for both local and regional distribution with strong workforce labor in the area.

# PARK LOCATION



# PARK NEIGHBORS

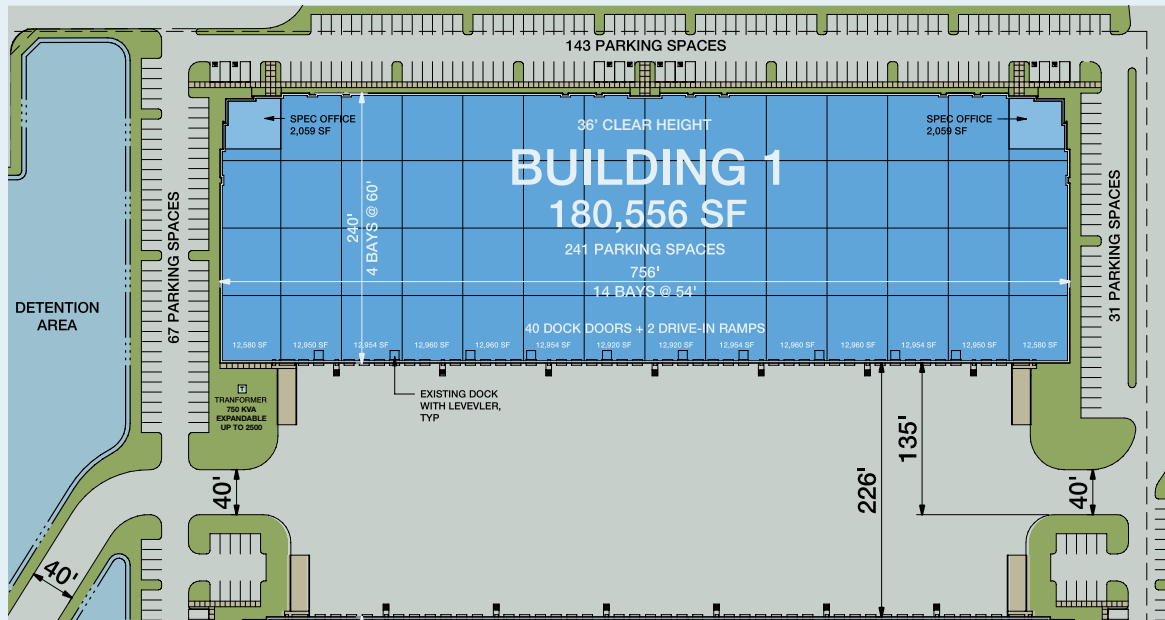


Fort Worth, Texas

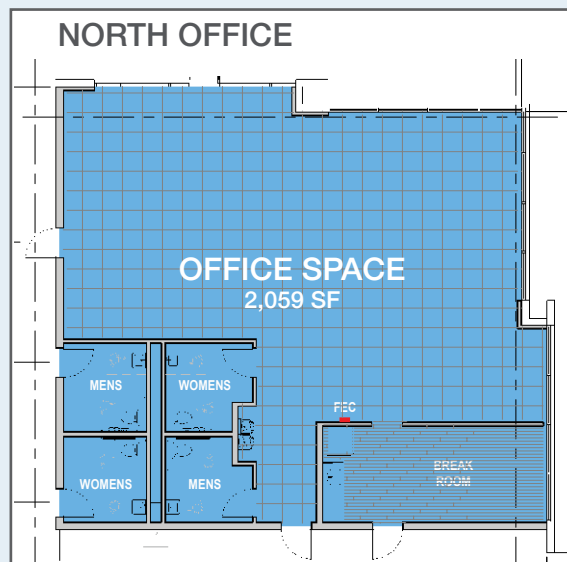
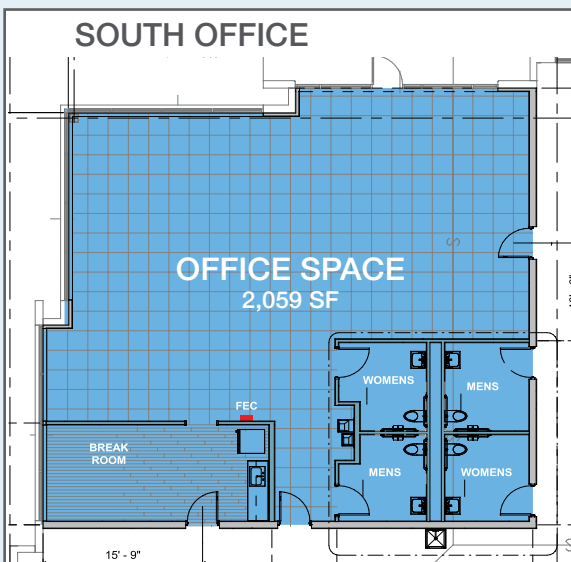
## BUILDING 1 AVAILABLE SPACE

# 180,556

Available Square Feet

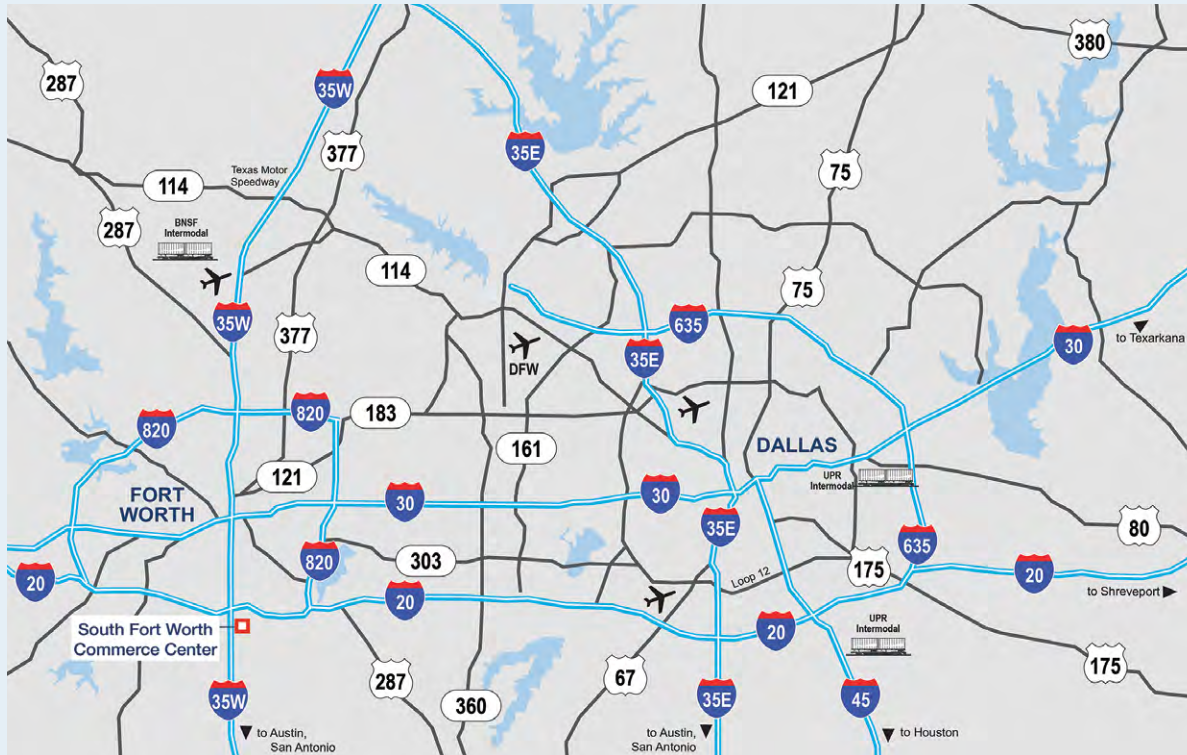


DIVISIBLE TO:	38,484 SF
CLEAR HEIGHT:	36'
TOTAL OFFICE AREA:	4,118 SF
DOCK DOORS:	40 (9' x 10')
DRIVE-IN DOORS:	2 (14' x 16')
DOCK EQUIPMENT:	(10) 40,000 lbs. mechanical levelers
AUTO PARKING:	241 spaces
TRUCK COURT:	226' (shared)
BUILDING DEPTH:	240'
COLUMN SPACING:	60' x 54'
FIRE PROTECTION:	ESFR with K-22 sprinkler heads
LIGHTING:	LED high bay lights with motion sensors



# SOUTH FORT WORTH COMMERCE CENTER

One of Dallas/Fort Worth's Most Desirable Distribution Locations



## DRIVING DISTANCES

### METRO AREAS

Downtown Fort Worth .....	10 miles
Arlington.....	18 miles
Dallas .....	40 miles
Austin .....	181 miles
Oklahoma City .....	208 miles

### MAJOR ROADS

I-35W .....	0 miles
I-20 .....	2.5 miles
I-820 .....	7.5 miles
I-30 .....	8 miles

### AIR

Fort Worth Meacham Airport ..	19 miles
DFW Airport .....	30 miles
Dallas Love Field Airport.....	41 miles

## ABOUT IDI LOGISTICS

IDI Logistics is a leading developer and manager of logistics real estate in the U.S. Our fully-integrated logistics platform has a long track record of speculative development, build-to-suits and value-add acquisitions.

We are dedicated to serving our customers with exceptional quality and service.



**HOLT LUNSFORD**  
COMMERCIAL

For more information, or to set up a tour, please contact:

**Matt Carthey**  
+1.817.710.1111  
mcarthey@holtlunsford.com

**George Jennings**  
+1.817.632.6151  
gjennings@holtlunsford.com

**Thomas Grafton**  
+1.817.632.6152  
tgrafton@holtlunsford.com

**Jon Harmon**  
+1.972.560.7001  
jon.harmon@idilogistics.com

**Tony Maclin**  
+1.972.560.7009  
tony.maclin@idilogistics.com

 **IDI Logistics**

www.idilogistics.com